

PART OF THE NORTH 1/2 OF SEC. 24, T.6N., R.1E., S.L.B. & M.

VALLEY-LAKE ESTATES NO. 2

LOTS 6-12, 25-26

TAXING UNIT: 318

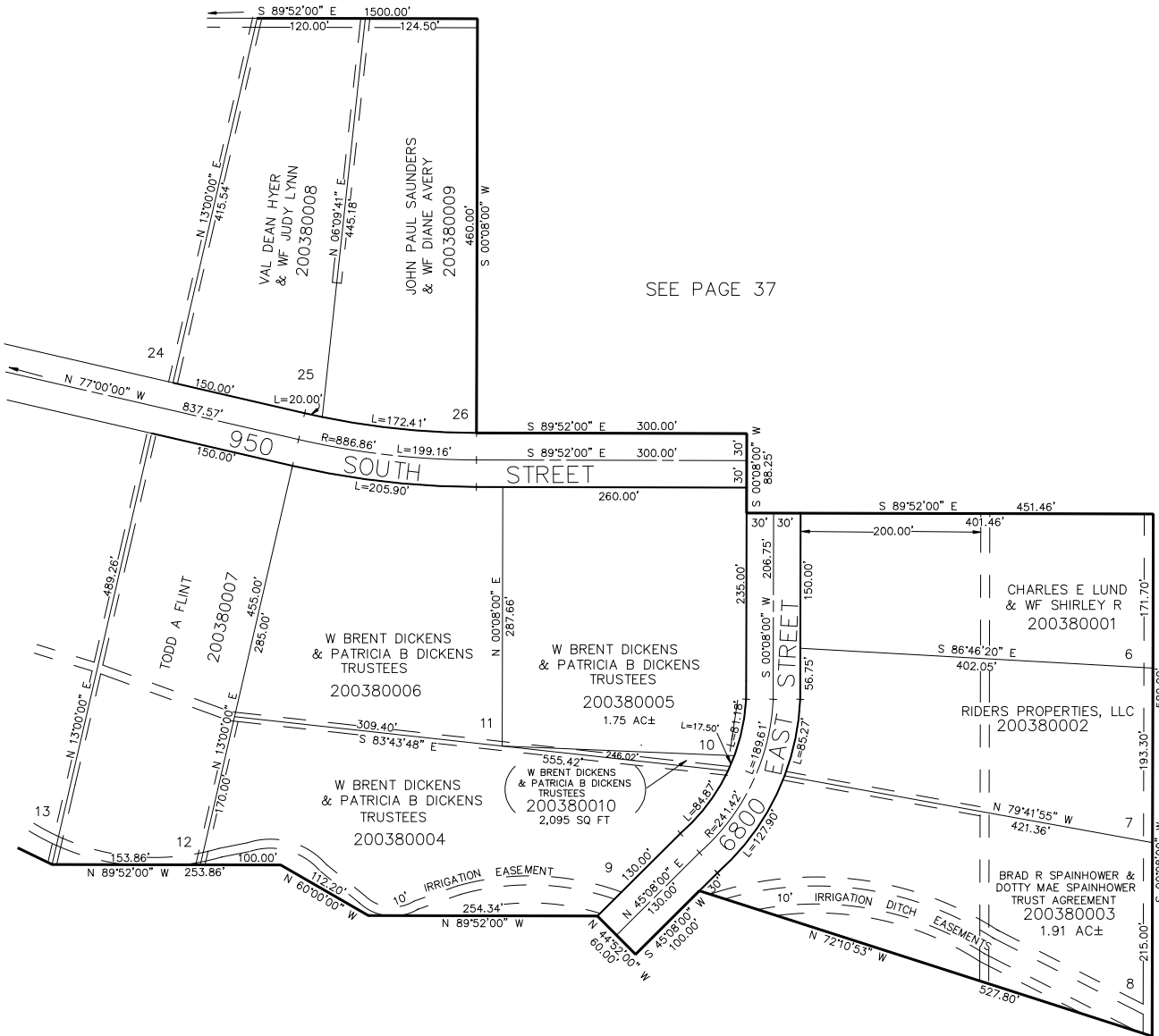
IN WEBER COUNTY

SCALE 1" = 100'

SEE PAGE 37

SEE PAGE 39

SEE PAGE 36



10' UTILITY & DRAINAGE EASEMENTS
 EACH SIDE OF PROPERTY LINES AS
 INDICATED BY DASHED LINES EXCEPT
 AS OTHERWISE SHOWN.

SEE PAGE 45

FOR COMPLETE ENG DATA SEE
 ORIGINAL DEDICATION PLAT IN
 BOOK 15, PAGE 27 OF RECORDS.